

Sterling Athletic Rubber Tile 1.25 Inch Technical Specifications

PHYSICAL DIMENSIONS				
Size	Thickness	Weight (lbs.) Ea. (Not less than...)		SofRAMP Length
		Plus	Premium (EPDM)	
23.75" x 23.75"	1.25"	19.3	22.7	47.5"

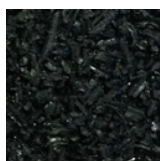
PHYSICAL PROPERTIES				
Test Description	ASTM Ref.	Results	Test Lab	Test Date
Acoustical A09-009	EC423/E795	SAA = 0.14, NRC = 0.15	RAL	0109
Acoustical TL08-363	E90/E413	STC = 53	RAL	1208
Acoustical IN08-050	E492/E989	IIC = 59	RAL	1208
Acoustical IFC09-002	E2179	Delta IIC 26 IICc 54	RAL	0109
Freeze Thaw	C67	No deterioration	SGS	1298
Rubber Deterioration/Air Oven	D573	No deterioration	SGS	1298
Slip Resistance	E303	Dry 102 Wet 62	SGS	0998
Slip Resistance	D2047	Dry .81 Wet .82	SGS	0299
Compression Deflection	D1667	29.5 PSI to 25% Compression	NWL	0195
Compression Set	D395	4.37% Permanent Set	NWL	0195
Tensile Strength	D412	107 PSI	SGS	0299
Elongation at Break	D412	165%	SGS	0299
Tear Strength	D624	33.1 Lbs/Inch	SGS	0299
Wear Surface Density (Durability)		>60 Lbs/CuFt		
Flammability	E648	Class 2	QAI	0609
Flammability - Burning Pill Test	D2859	Pass	NWL	0195
Flammability - Roof Covering	E108	Class A (Premium)	FMR	0299

DuraFLEX is manufactured to be 23.75"X23.75" with a tolerance of +/- 1/8th" due to heat related expansion and contraction of rubber products.

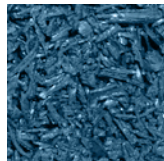
PACKAGING INFORMATION					
DuraFLEX Description	Thickness	Peices Per Pallet	Pallet Weight	Pallet Height	Other Packaging Information
PLUS	1.25"	100	1930 Lbs.	50"	Standard Pallet Size - 50"x50" Standard Pallets in 48" Van = 19
PREMIUM	1.25"	100	2270 Lbs.	50"	

Warranty: Sterling Rubber Tile 1.25 Inch has a Limited Lifetime Warranty

Standard Colors:



Black



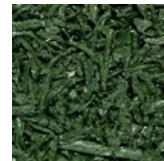
Blue



Brown



Gray



Green



Terra Cotta

Greatmats.com
117 Industrial Ave
Milltown, WI 54858

877-822-6622
info@greatmats.com
revised 8 / 2016