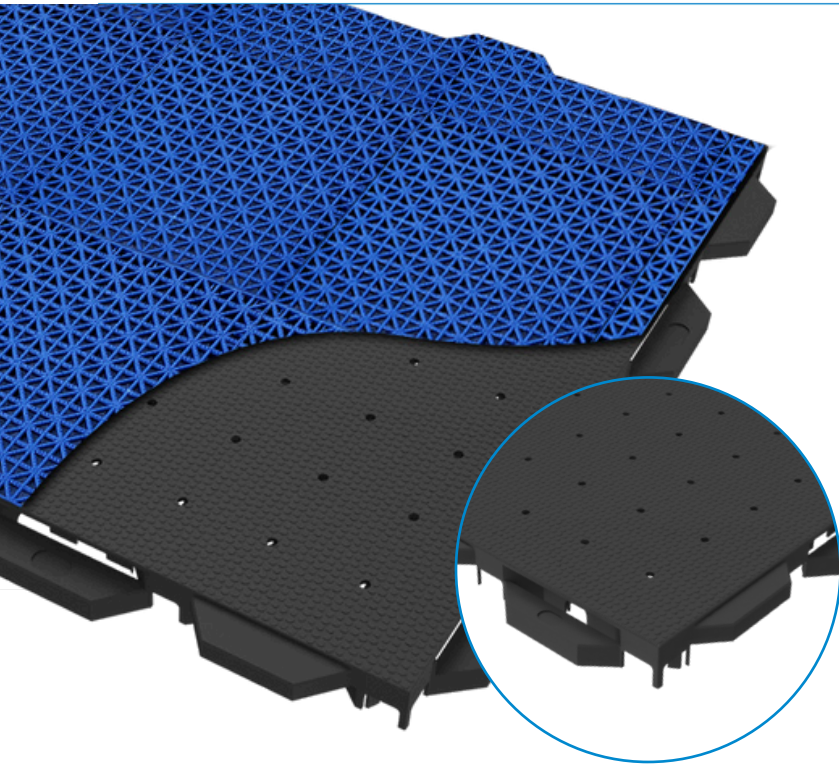






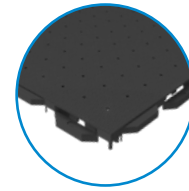
Court Foundation Panel

Sports and Multipurpose



- 
Athlete Protection
 Lower back, knee, and joint forgiveness for players
- 
Resilient Material
 Specially blended material stands up to high intensity play
- 
Enhanced Surface and Locking System
 The tile interlocking system is designed to allow for thermal expansion and contraction without causing the surface to buckle while also providing players with lateral forgiveness
- 
10 Year Tile Warranty
 We earn our customers for life with the industry's best and most clear warranty

Black



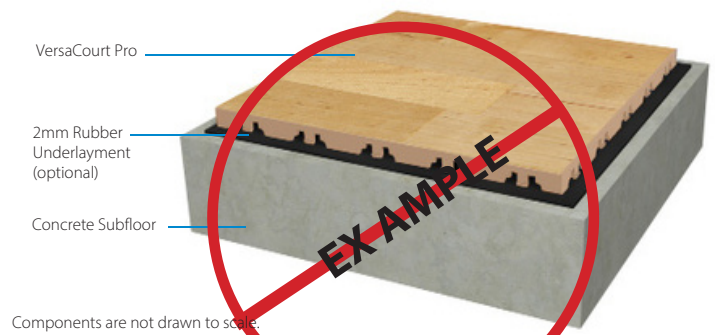
Product Specs

Size & Weight – 30" x 30" x 1.25" thick, 10 lbs.
Installed Size – 28" x 28" x 1.25" thick.

PSI – Exceeds 500 lbs. per sq. in.(concrete slab).

Material – Specially blended high impact polypropylene.

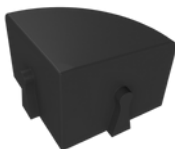
Installation – Manufacturer recommends a geosynthetic underlayment be used between tile and subsurface.



Components are not drawn to scale.

Accessories

Corner



Edge



Ramp

